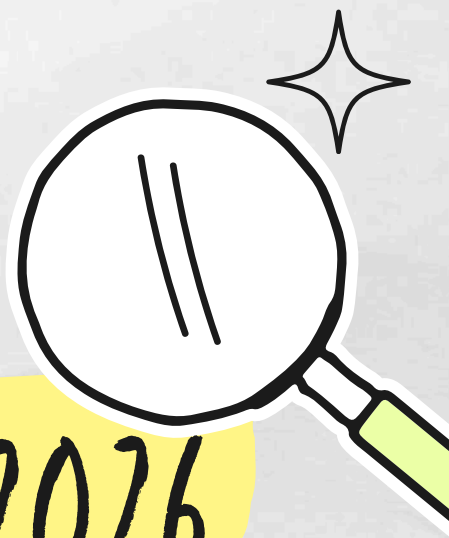


FAMILY ENGAGEMENT



HAPPY NEW YEAR-2026

Happy New Year to all our wonderful families! It's great to be back and ready for another year filled with family events, workshops, teas and coffees at the Y Pod, and plenty of friendly chats. There's lots coming up, so keep an eye on the School Gateway app and your emails for updates over the next few weeks. You're always welcome to drop in for a chat, or get in touch anytime at familyengagement@bracklapprimary.co.uk – I'm looking forward to another fantastic year together.

Mrs Kelland- Family Engagement Officer



1 COFFEE, CUPPA, CATCH UP

Start the new school year with a warm welcome. Join us for a relaxed tea and coffee afternoon with tasty treats on Friday 16th January 2.15pm- a chance to connect, chat, and meet other families as we begin the year together.

2 PRODUCT OF THE MONTH

Product of the Month is officially back, and we're kicking things off with a fun one: jars! Thanks so much for all the support over the past few months-it's made such a difference. If you've got anything in a jar (sauces, jams, pickles, you name it), just pop it into the trolley by the office and it'll head straight back into the Pantri to help those who need it. Thanks for keeping the momentum going!





3

UNIFORM RAILS

A little reminder that our uniform rails are always open for anyone who needs them. You're welcome to take whatever recycled uniform items are helpful for your family. The rails are usually available on the infant yard-nursery to age 6 sizes and by the pod for age 6+ every Tuesday and Thursday. If you can't find the size you're looking for, just pop into the office and speak to Mrs Kelland.

4

COMMUNITY FAIR

Our community fair was such a success last year that we're excited to be hosting another one on Tuesday 27th January, 2.30pm-4pm. Come along and connect with over 20 local agencies and services offering support, advice, and resources for families. Expect freebies, refreshments, and plenty of opportunities to chat and connect. There's no need to sign up-just drop in anytime between 2.30pm and 4pm. For more information, please speak to Mrs Kelland, our Family Engagement Officer.

BPS >>> **Tuesday 27th January**
Pop in anytime between 2.30-4pm

Community Fair

Join us at our first Community Fair in the school hall, where you'll have the opportunity to connect with over **20 local agencies** and services providing valuable support, advice, and resources for families.

NO sign up required
All welcome

- SHINE
- Financial support
- Early Help
- Well being/Mental health
- Citizens Advice

Refreshments provided

familyengagement@bracklprimary.co.uk

